



C200 Cloud Attached Storage® Appliance

All-in-One Network Attached Storage and Cloud Services Gateway

- Integrated On-Site and Off-Site Data Protection
- Enterprise-Grade NAS Features
- Remote Access & Management



Hybrid 2-Bay Storage Appliance with Integrated Cloud Services

Ideal for small businesses and branch offices, the C200 Cloud Attached Storage appliance from CTERA Networks is an innovative device combining Network Attached Storage (NAS) with cloud storage services for off-site data protection. The CTERA C200 can be managed remotely and does not require installation of desktop software, ensuring smooth deployment and operation.

Robust Data Protection

CTERA's C200 seamlessly integrates onsite and off-site storage, providing a fast local copy of files stored on the appliance and an additional copy in the cloud, with automated synchronization and file sharing features. Users can access both local files as well as cloud-stored backups from anywhere, using a Web browser.

Efficient Cloud Backup

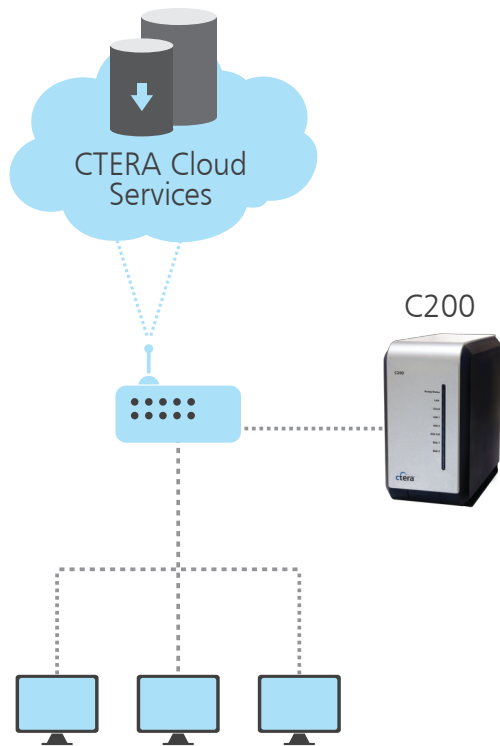
The C200 performs optimized cloud backup for the entire local network, unlike desktop-based solutions that back up individual PCs. It runs in the background without affecting individual PC performance.

Embedded Software

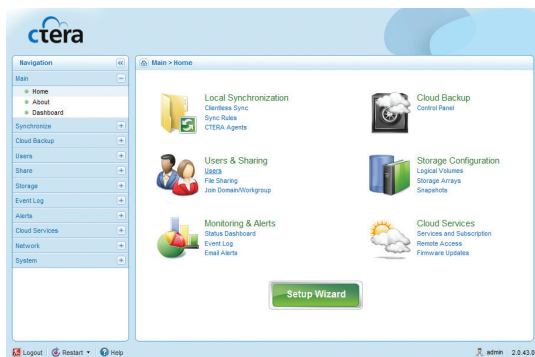
CTERA's appliances do not require installing client software on PCs or servers. This approach delivers smooth installations and eliminates the risk of OS compatibility issues and software conflicts.

Full Remote Management

Service providers and enterprises can easily use the CTERA management portal to monitor thousands of devices from a single Web based management interface.



Connect the C200 to your router for instant hybrid storage & data protection



The C200's easy-to-use Web interface

About CTERA

CTERA™ Networks revolutionizes storage and data protection for SMBs and branch offices with Cloud Attached Storage®, a hybrid solution that combines secure cloud storage services with on-premises storage appliances for a seamless user experience. CTERA provides a cloud services platform that enables service providers and IT resellers to quickly deliver cloud storage, hybrid local/offsite backup and data protection as managed services to their customers. For more information, visit www.ctera.com.

Appliance Features

- Clientless backup of Desktop PCs and file servers
- Roaming laptop backup with CTERA Agent
- UPnP and Bonjour discovery
- Resizable logical volumes
- Automated thin local snapshots
- Microsoft Active Directory support
- Role-based user access control
- Web-based user interface
- Custom email alerts and reporting
- Windows File Sharing (CIFS), Apple File Sharing (AFP), Time Machine, NFS, rsync
- RAID0, RAID1 and JBOD storage configurations
- NTFS/FAT32/EXT3/NEXT3 file systems
- FTP server
- Volume encryption AES-256
- iSCSI target
- Requires Microsoft Internet Explorer 7.0, Mozilla Firefox 2.0, Chrome 3.0 or newer

Cloud Service Features

- Optimized incremental cloud backup with data compression
- Retains previous file versions
- Scheduled and on-demand backup
- Restore methods: Windows Previous Versions, Virtual cloud drive, Local Web interface or online via CTERA Portal
- Secure Web-based portal provides access to backups and local files from anywhere
- Secure remote management
- Backups secured using 256-bit AES encryption and SHA-1 fingerprints, with user-specific secret passphrase
- All communications secured with 128-bit SSL (Secure Sockets Layer)

CTERA Agent Features

- Roaming computer backup with dynamic IP support
- Locked files backup
- Centrally managed from the C200 Web interface
- Requires Windows 7, Vista or XP

Hardware Specifications

- 2 x 3.5" SATA Hot Swap hard drive support with S.M.A.R.T
- Storage capacity up to 4TB
- 2 x USB 2.0 high-speed ports for external drives
- 1 x Gigabit Ethernet
- Power consumption 50W max
- FCC, CE, RoHS, WEEE compliance
- Operating environment 0-40°C, Humidity 5%-90% (non-condensed)
- Dimensions: 162.5(H) x 210(D) x 95(W) mm / 6.4(H) x 8.27(D) x 3.74(W) inch
- Weight 1.1Kg (excluding hard drives)

CTERA Networks US

2225 E. Bayshore Road, Suite 200
Palo Alto, CA 94303
Tel: (650) 227-4950

CTERA Networks Ltd.

24 Imber St., Petah Tikvah
Israel 49511
Tel: +972-3-919-2061